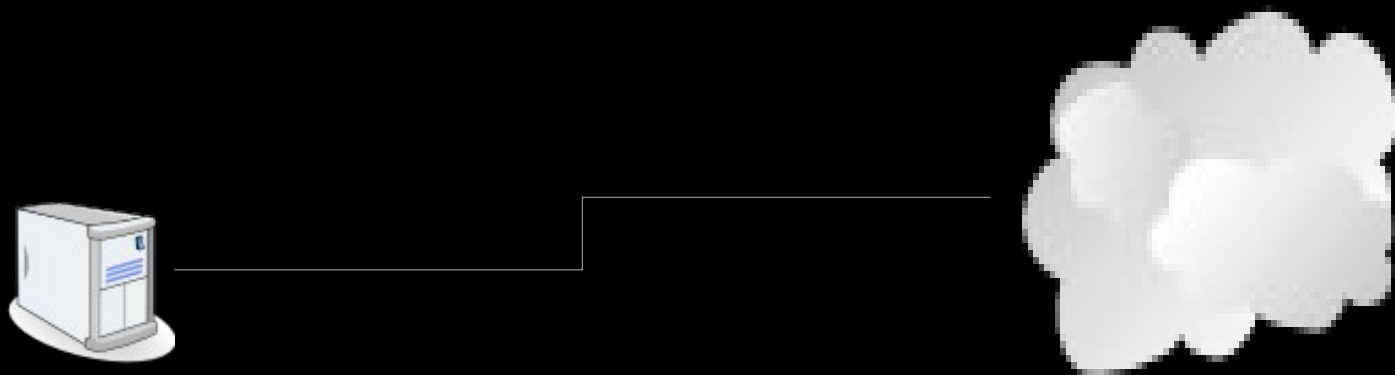


Gustavo Homem - 2007



Implementação de acessos à Internet com Linux

Monitorização e gestão remota

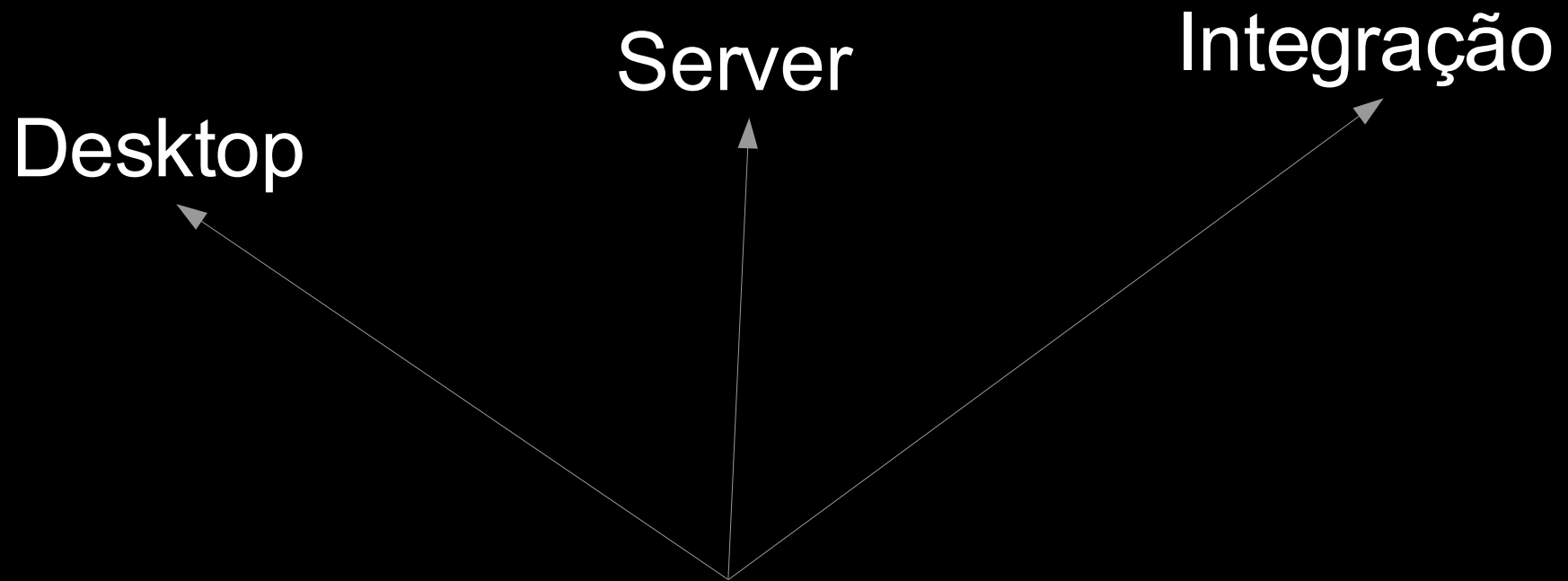


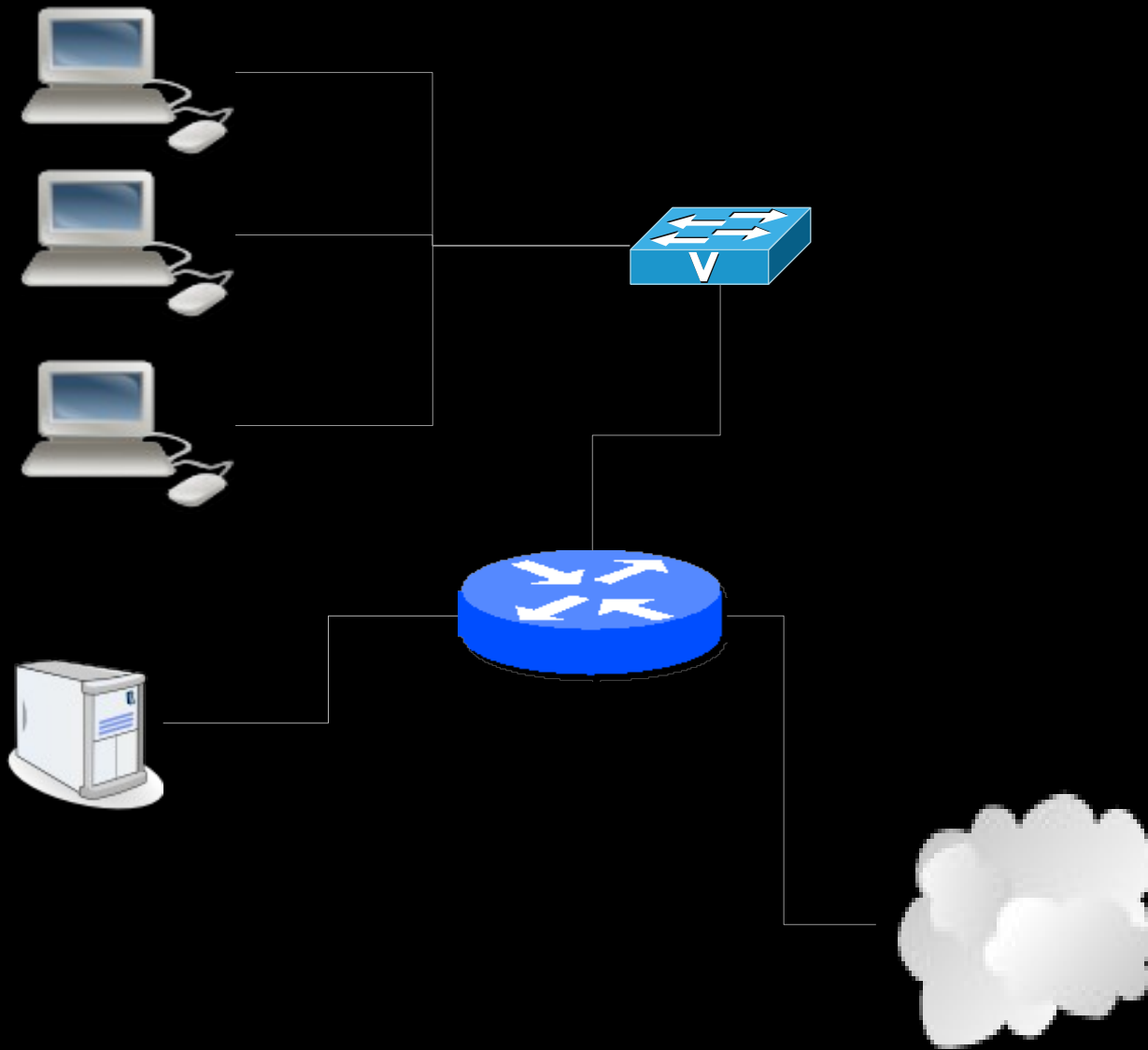
ANGULO SOLIDO

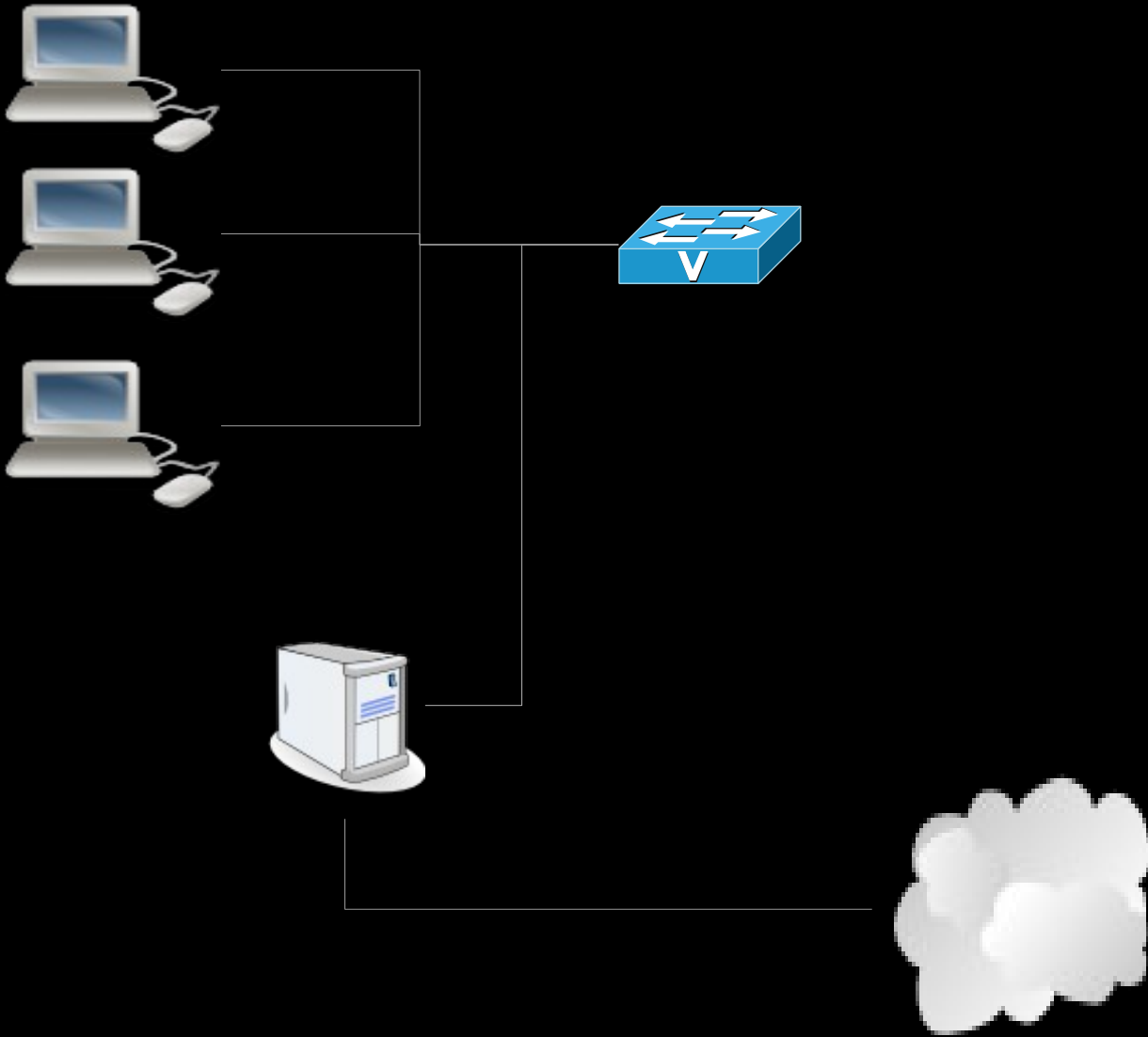


Rápido e eficaz
Económico
Chave-na-mão

ANGULO SOLIDO









Hardware selection



Soekris Engineering

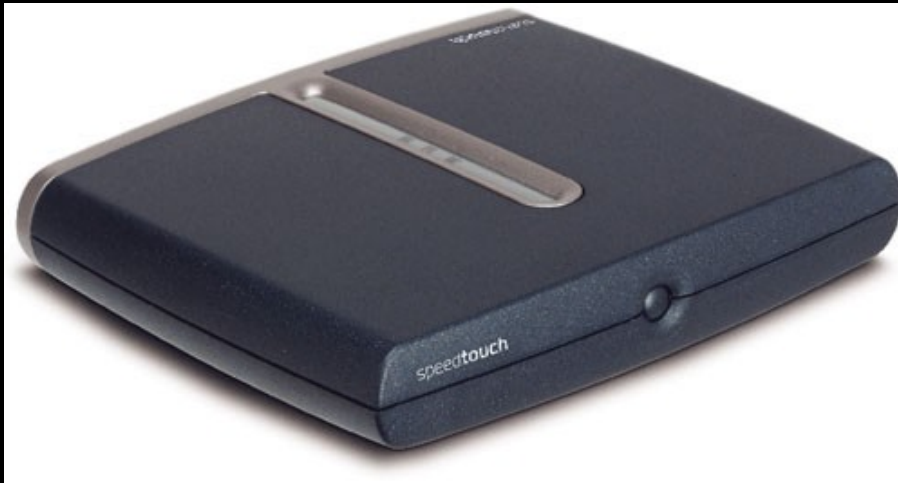


ASUS RS120



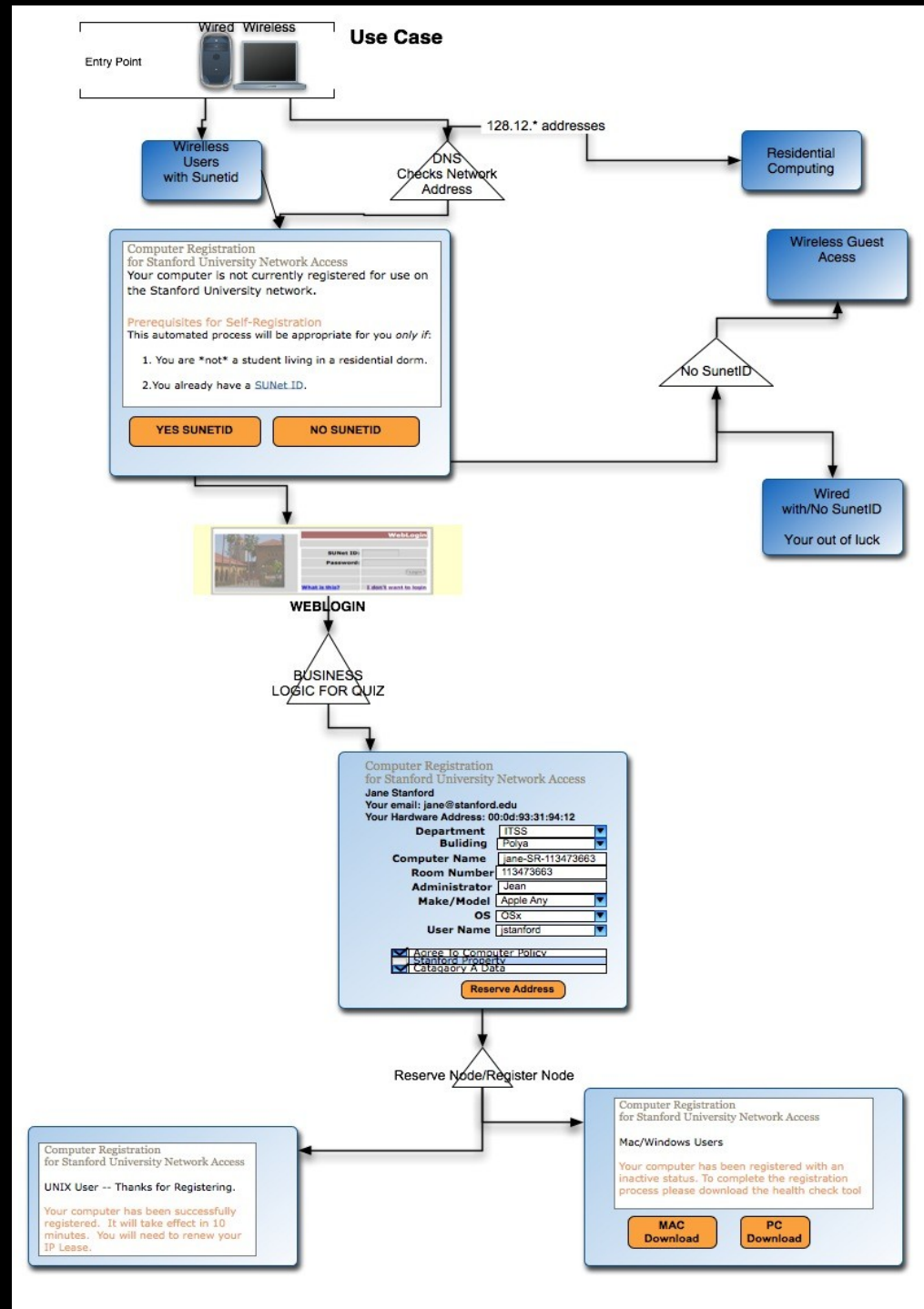
ASUS TS300

HUAWEI SMARTAX MT 882



SPEEDTOUCH 5xxi

Processos



PPPoE Client



PPPoE

Bridged Mode



PPPoEoA

Stable - complexity is handled by Linux
Device independent
Pushes the public IP to the server

xxx.angulosolido.pt
Dynamic IP

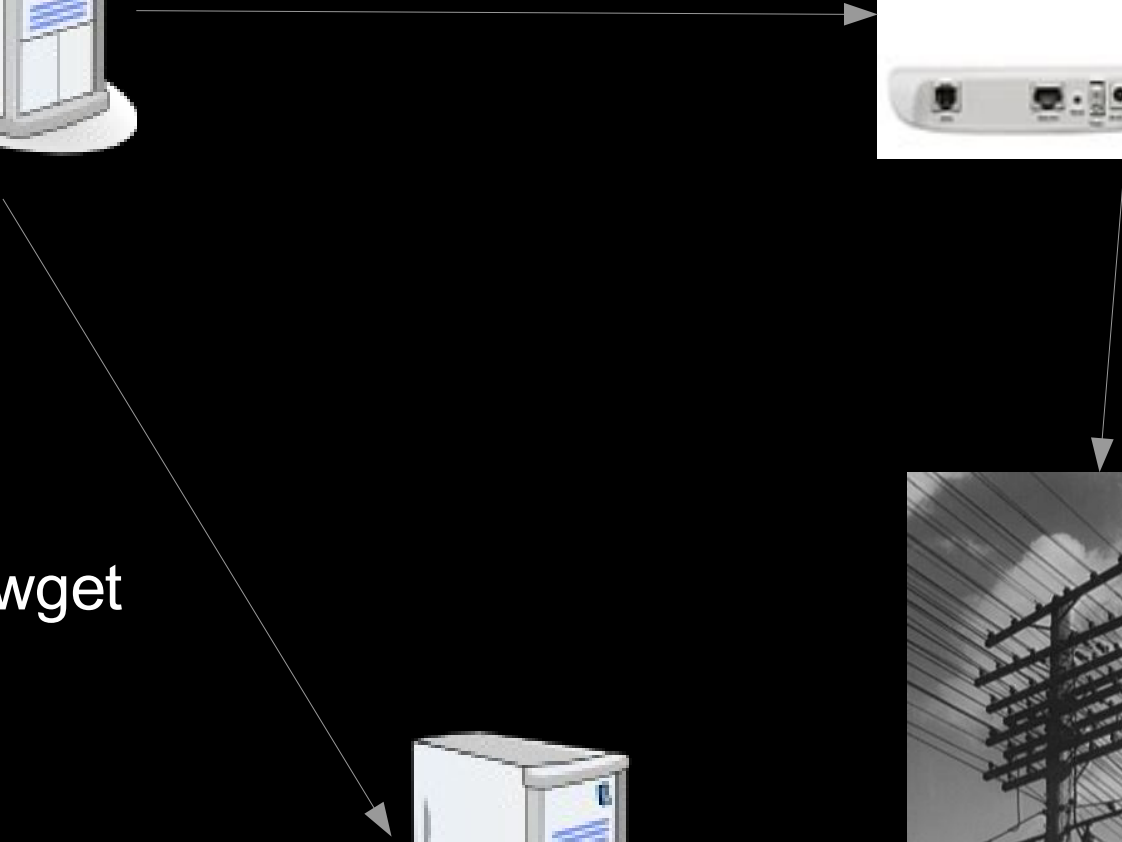
Bridged Mode



cron+wget



DNS Server

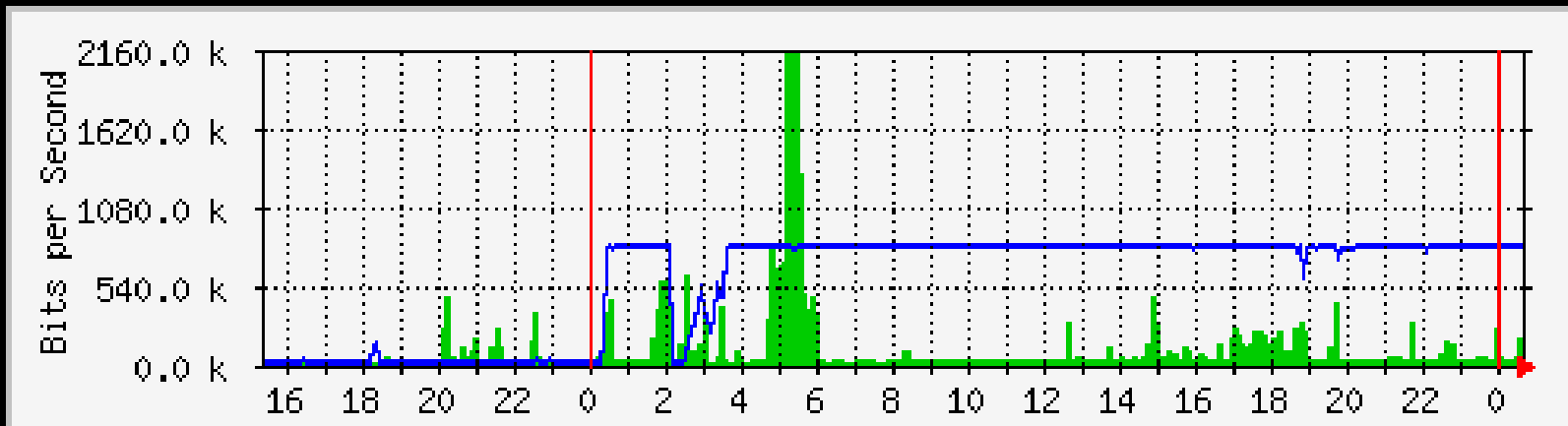




Packet filtering

Traffic shaping





<http://downloads.angulosolido.pt/iptables/>

<http://downloads.angulosolido.pt/QoS/>

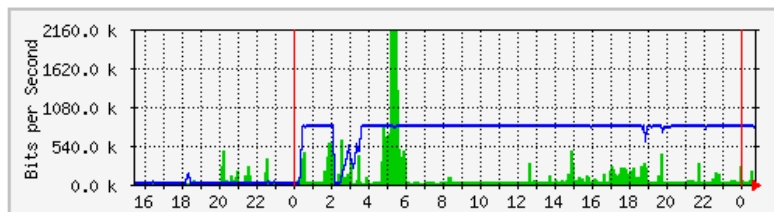
SNMPd + MRTG = Dados de performance

- tráfego
- cpu load
- nr processos
-

Max Speed: 20 Mbit/s

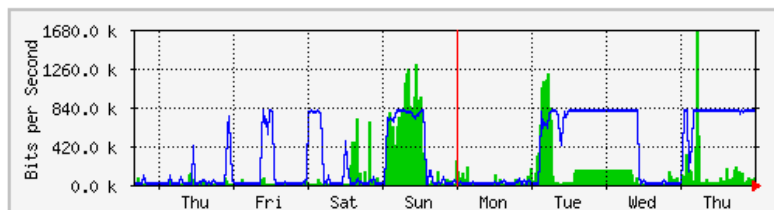
The statistics were last updated **Friday, 19 October 2007 at 0:45**,
at which time **'people'** had been up for **86 days, 13:54:11**.

`Daily' Graph (5 Minute Average)



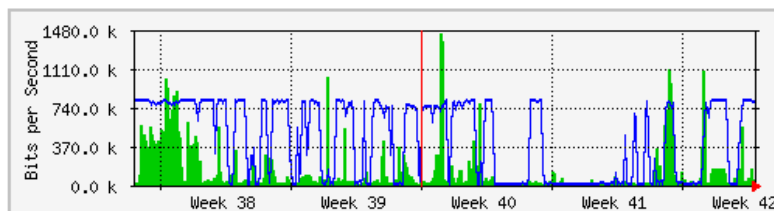
| | Max | Average | Current |
|-----|---------------------|-------------------|-------------------|
| In | 2155.6 kb/s (10.8%) | 94.1 kb/s (0.5%) | 22.4 kb/s (0.1%) |
| Out | 804.9 kb/s (4.0%) | 565.7 kb/s (2.8%) | 801.5 kb/s (4.0%) |

`Weekly' Graph (30 Minute Average)



| | Max | Average | Current |
|-----|--------------------|-------------------|-------------------|
| In | 1661.0 kb/s (8.3%) | 118.6 kb/s (0.6%) | 68.0 kb/s (0.3%) |
| Out | 803.8 kb/s (4.0%) | 309.8 kb/s (1.5%) | 802.3 kb/s (4.0%) |

`Monthly' Graph (2 Hour Average)



| | Max | Average | Current |
|--|-----|---------|---------|
|--|-----|---------|---------|

NAGIOS = Monitorização de serviços

- ssh
- http
- smtp
- pop3
- pop3s
- hylafax
- generic tcp....

Current Network Status

Last Updated: Thu Dec 14 01:47:25 PST 2006
Updated every 90 seconds
Nagios® - www.nagios.org
Logged in as *guest*

- [View History For all hosts](#)
- [View Notifications For All Hosts](#)
- [View Host Status Detail For All Hosts](#)

Host Status Totals

| Up | Down | Unreachable | Pending |
|--------------|------|-------------|---------|
| 0 | 0 | 0 | 0 |
| All Problems | | All Types | |
| 0 | | 0 | |

Service Status Totals

| OK | Warning | Unknown | Critical | Pending |
|--------------|---------|-----------|----------|---------|
| 103 | 1 | 0 | 3 | 0 |
| All Problems | | All Types | | |
| 4 | | 107 | | |

Service Status Details For All Hosts

| Host | Service | Status | Last Check | Duration | Attempt | Status Information |
|-------------------------------------|---|--------|---------------------|------------------|---------|---|
| aus2 | http - aus2.mozilla.org | OK | 12-14-2006 01:44:30 | 28d 1h 30m 34s | 1/3 | (No output!) |
| | https - aus2.mozilla.org | OK | 12-14-2006 01:45:50 | 14d 18h 14m 41s | 1/3 | (No output!) |
| | https_cert - aus2.mozilla.org | OK | 12-14-2006 01:45:00 | 28d 5h 3m 33s | 1/3 | OK - Certificate will expire on 01/05/2008 05:40. |
| dm-nagios01 | http - nagios.mozilla.org | OK | 12-14-2006 01:46:31 | 203d 8h 41m 43s | 1/3 | HTTP OK HTTP/1.1 200 OK - 342 bytes in 0.001 seconds |
| dm-peep01 | http - people.mozilla.com | OK | 12-14-2006 01:46:31 | 215d 13h 40m 25s | 1/3 | HTTP OK HTTP/1.1 200 OK - 370 bytes in 0.009 seconds |
| dm-webtools01 | http - bonsai.mozilla.org | OK | 12-14-2006 01:46:51 | 0d 15h 39m 27s | 1/3 | HTTP OK HTTP/1.1 200 OK - 433 bytes in 0.002 seconds |
| | http - lxr.mozilla.org | OK | 12-14-2006 01:45:01 | 0d 15h 41m 27s | 1/3 | HTTP OK HTTP/1.1 200 OK - 6890 bytes in 0.002 seconds |
| | http - tinderbox.mozilla.org | OK | 12-14-2006 01:46:31 | 0d 15h 40m 27s | 1/3 | HTTP OK HTTP/1.1 200 OK - 650 bytes in 0.002 seconds |
| download02 | http - download02 | OK | 12-14-2006 01:46:31 | 41d 5h 48m 40s | 1/3 | HTTP OK HTTP/1.1 200 OK - 716 bytes in 0.001 seconds |
| download03 | http - download03 | OK | 12-14-2006 01:44:51 | 16d 10h 44m 30s | 1/3 | HTTP OK HTTP/1.1 200 OK - 716 bytes in 0.001 seconds |
| dyna-addons.nslb.si | http - addons.mozilla.org | OK | 12-14-2006 01:44:44 | 36d 11h 11m 55s | 1/3 | HTTP OK HTTP/1.1 200 OK - 6006 bytes in 0.189 seconds |

| Host | Services | Actions |
|------|------------------------------------|---------|
| | oficinas-Connectivity oficinas-ssh | |
| | oficinas-Connectivity oficinas-ssh | |
| | oficinas-Connectivity oficinas-ssh | |
| | oficinas-Connectivity oficinas-ssh | |
| | oficinas-Connectivity oficinas-ssh | |
| | oficinas-Connectivity oficinas-ssh | |
| | oficinas-Connectivity oficinas-ssh | |
| | oficinas-Connectivity oficinas-ssh | |
| | oficinas-Connectivity oficinas-ssh | |
| | Connectivity-Interactive PTP SSH | |
| | Connectivity SSH | |
| | HTTP SMTP SPOP3 | |

| Host | Services | Actions |
|------|---|---------|
| | Connectivity HTTP LDAPS SMTP SPOP3 SSH | |
| | /dev/hda1 Free Space Connectivity Current Users HTTP SMTP SPOP3 SSH | |

| Host | Services | Actions |
|------|------------------|---------|
| | Connectivity SSH | |

NAGIOS + MRTG

Nagios

General

- Home
- Documentation

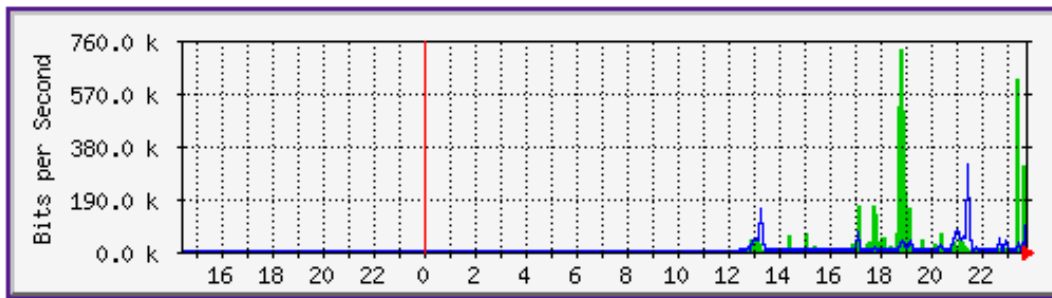
Monitoring

- Tactical Overview
- Service Detail
- Host Detail
- Hostgroup Overview
- Hostgroup Summary
- Traffic Summary
- Hostgroup Grid
- Servicegroup Overview
- Servicegroup Summary
- Servicegroup Grid
- Status Map
- 3-D Status Map
- Service Problems
- Host Problems
- Network Outages

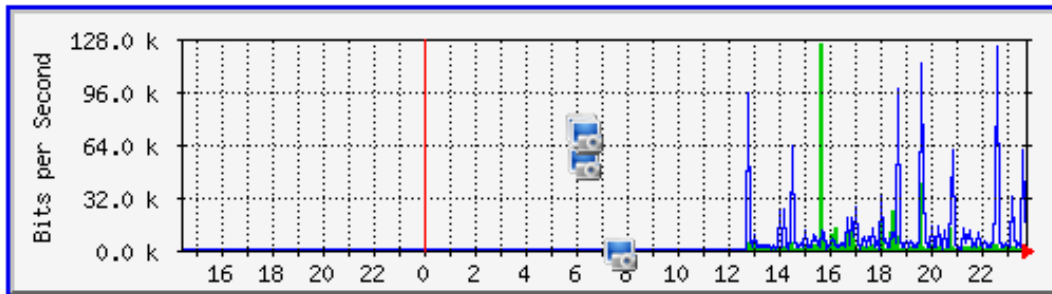
Show Host:

- Comments
- Downtime

Traffic Analysis for people



Traffic Analysis for optimiza

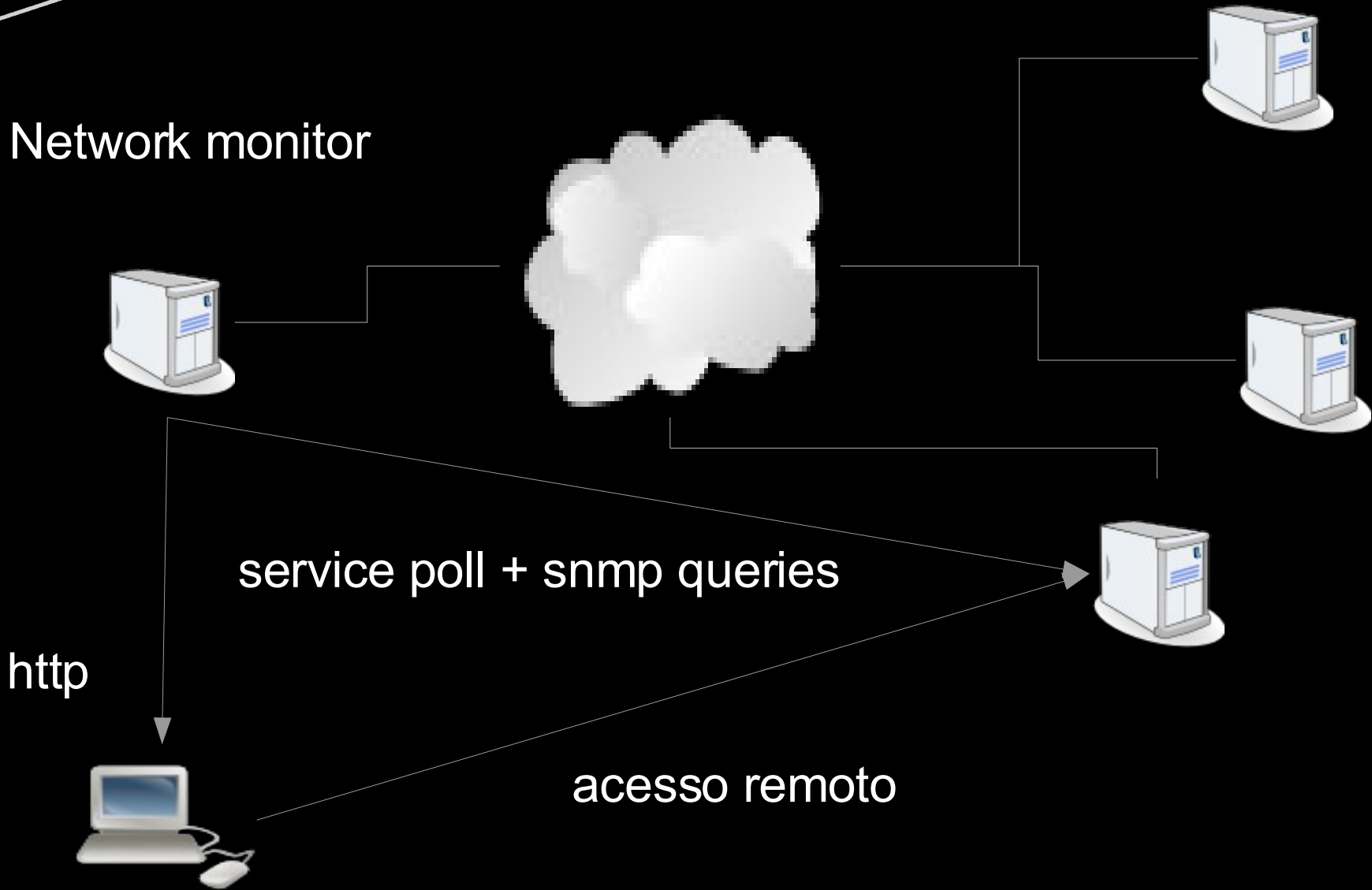


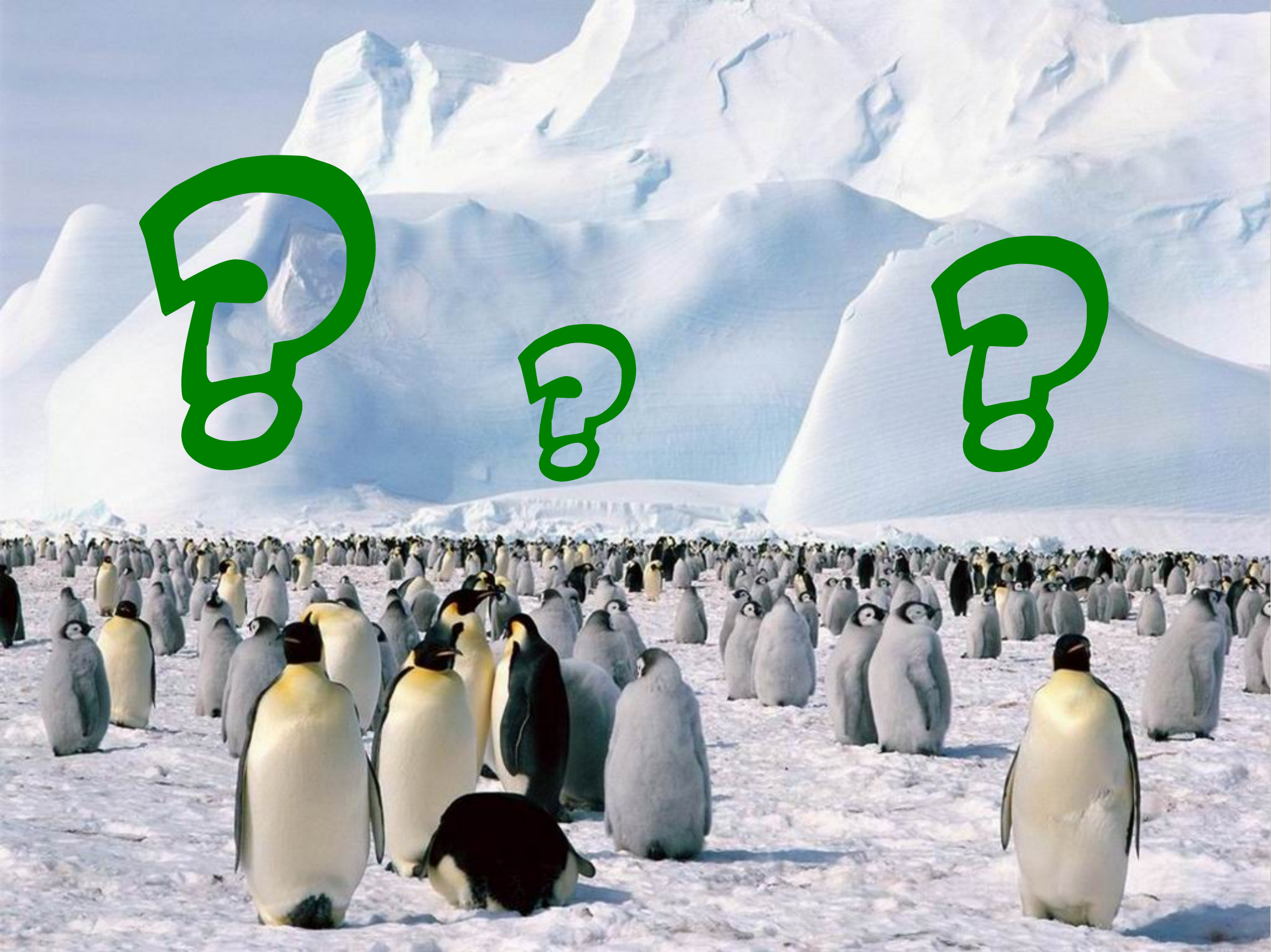
Acesso remoto cifrado



ANGULO SOLIDO

Network monitor





சூ

சூ

சூ